

What's New in OpenEdge BPM 11.4

Suresh Inavolu
Software Engineer
Progress Software

PROGRESS
EXCHANGE 2014

Agenda

- New Features at a Glance
- What is BPM and Why OEBPM
- New Features in Detail
- Demo
- Q&A

New Features at a Glance

| | |
|---|--|
| 1 | Support for business rules |
| 2 | Character data longer than 30k |
| 3 | SharePoint documents |
| 4 | Progress EasyI DB driver |
| 5 | Progress Rollbase as presentation type |

What Is BPM and Why OpenEdge BPM

Business Process Management

- What is a process?
 - Best understood with an example
- A series of steps that needs to perform in order complete a job



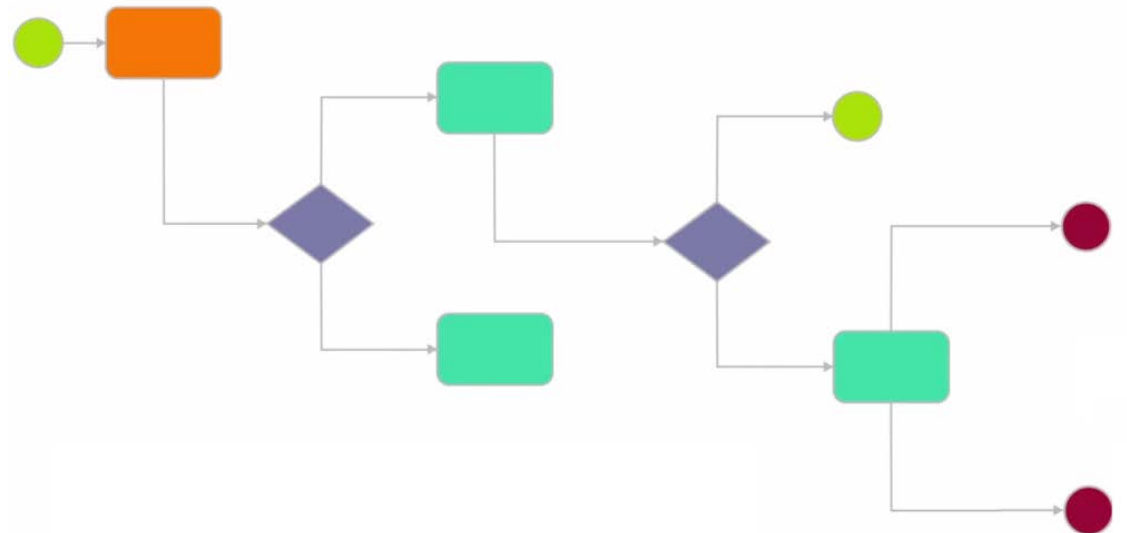
Why BPM – Business Process Management?

- Visibility
- Monitoring
- Optimization
- Reporting



Why OpenEdge BPM?

- Integrated with OpenEdge Application platform
- With minor changes, gain visibility into your existing OpenEdge application
- Make your application responsive
 - Find bottlenecks
 - Quickly update the process
- Use-case
 - Monitoring Process
 - OpenEdge Adapter



New Features in Detail

PROGRESS
EXCHANGE 2014

I Have Many Rules to Follow...

- Business Rules using Corticon Adapter in OpenEdge BPM
- Use-case
 - Health Insurance – Calculate Risk Factor
- Why Corticon Business Rules
 - Easily model complex business rules without custom coding
 - Identify conflicts rules
- Ability to export dataslot from Process
- Import it in Corticon studio and design rules



My Data Is Longer Than 30K...

- Support for Character data larger than 30k using LONGCHAR datatype
- Use-cases
 - Take decision based on content of a document
 - Map SOAP Response of the Web Service call
- Works with all Adapters and in Forms
- Can support Character data up to 10 MB (default is 2MB)
- Stored as CLOB in DB and hence not available in Reporting

Where Is My Document?

- Write Business Processes that run on SharePoint documents
- Use-case
 - Health Records in SharePoint and Process management using OEBPM
- Supports SharePoint 2010 and 2013
- Invoke Business Process on create/change of a document or its metadata in SharePoint
- Ability to get/set content and its metadata from OpenEdge BPM



My Data is on Cloud!

- DB adapter now has Progress EasyI as a driver
- Use case
 - A new customer added to your Salesforce, want to update legacy systems using OpenEdge BPM
- Business Process can now take automated decision based on data on cloud like Salesforce, HubSpot



Not Just Web Forms

- BPM data as OpenEdge Service
- Use case
 - Easily develop mobile application for BPM process
 - REST interface for BPM data
- How
 - Deploy the provided ABL application on OpenEdge App server
 - Access using the OpenEdge catalog



Miscellaneous Features

- Import/Export in BPM Studio
- JBoss EE 5.2 support
- Eclipse 4.2 support

Demo

Q&A

New Features at a Glance

| | |
|---|--|
| 1 | Support for business rules |
| 2 | Character data longer than 30k |
| 3 | SharePoint documents |
| 4 | Progress EasyI DB driver |
| 5 | Progress Rollbase as presentation type |

PROGRESS EXCHANGE²⁰¹⁴

Visit the Resource Portal

- **Get session details & presentation downloads**
- **Complete a survey**
- **Access the latest Progress product literature**

www.progress.com/exchange2014



PROGRESS