

Next Generation of On-Premise Business Applications

OpenEdge Advanced Development:

Enhancing Productivity, Agility & Visibility with
Progress Corticon BRMS and Progress OpenEdge BPM

David Atkins Ph.D.
Senior System Engineer
Progress Software

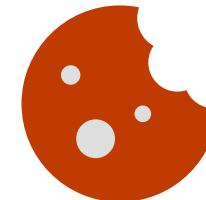
PROGRESS
EXCHANGE 2014

Agenda & Timeline

- Goals, introductions & logistics
- The What? Why? And How? of Next Gen Applications 20m
- OpenEdge BPM: overview, demo, **hands-on lab** & discussion 60m
- Corticon BRMS: overview, demo & **hands-on lab** & discussion 60m
- Agility in Action: **hands-on lab** 30m
- Closing discussion



Fresh drinks & snacks
@ 10:30 & 2:30



Today's Goals

- Understanding of Corticon & OpenEdge BPM
- Hands on familiarity & experience
- See value of Corticon BRMS and OpenEdge BPM
- Spark some ideas

**PLEASE... Interact... Learn... Think
of a use case... Experiment...**



Introductions



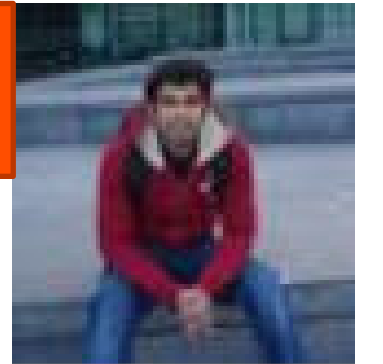
David Atkins, Solutions Engineer, Progress (Massachusetts)

Abhinav Agarwal, Principal OpenEdge-BPM Engineer, Progress India

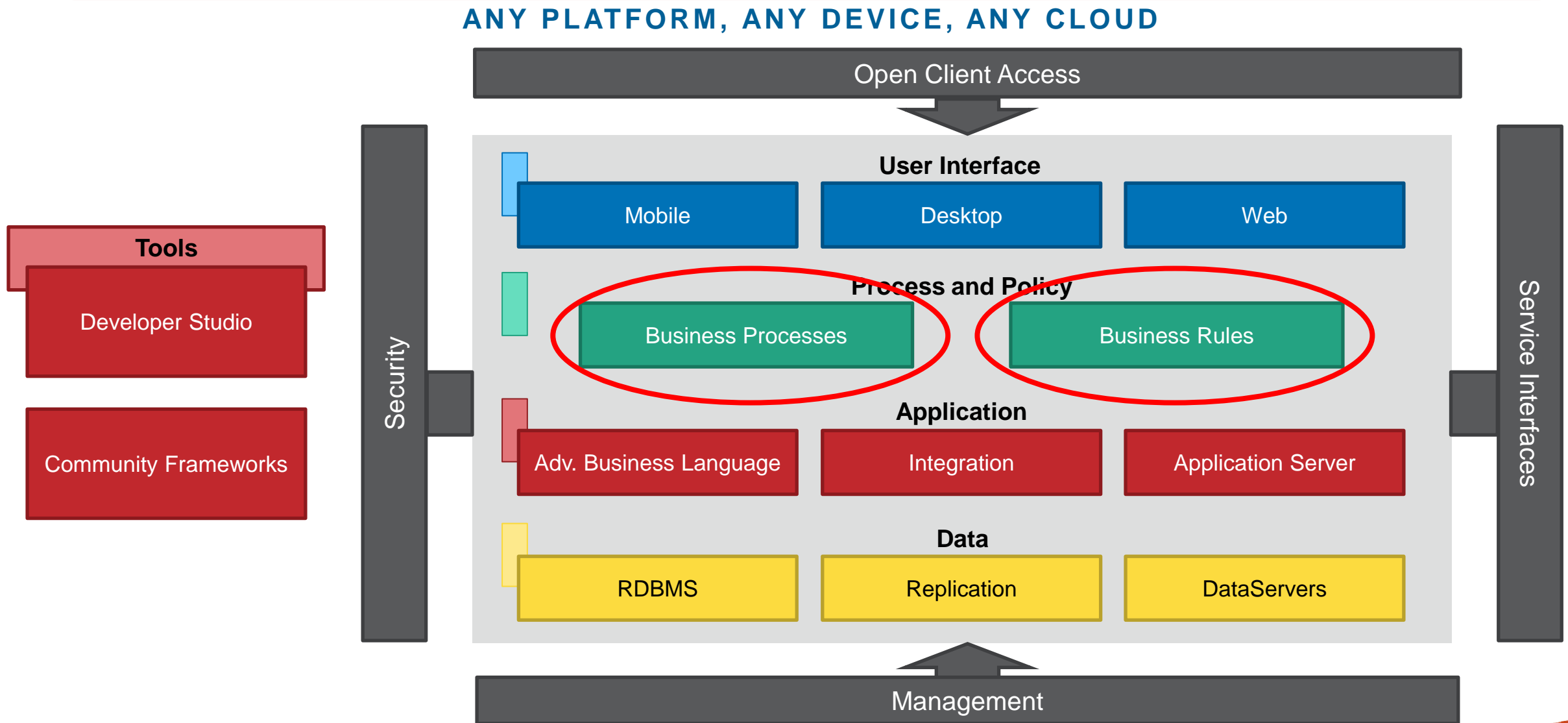


Suresh Inavolu, Principal OpenEdge-BPM Engineer, Progress India

Jawahar Surapaneni, Senior OpenEdge-BPM QA Engineer, Progress India



BPM and BRMS in “Next-Gen” OpenEdge Reference Architecture



CEO, Owner, Sales Director Must...

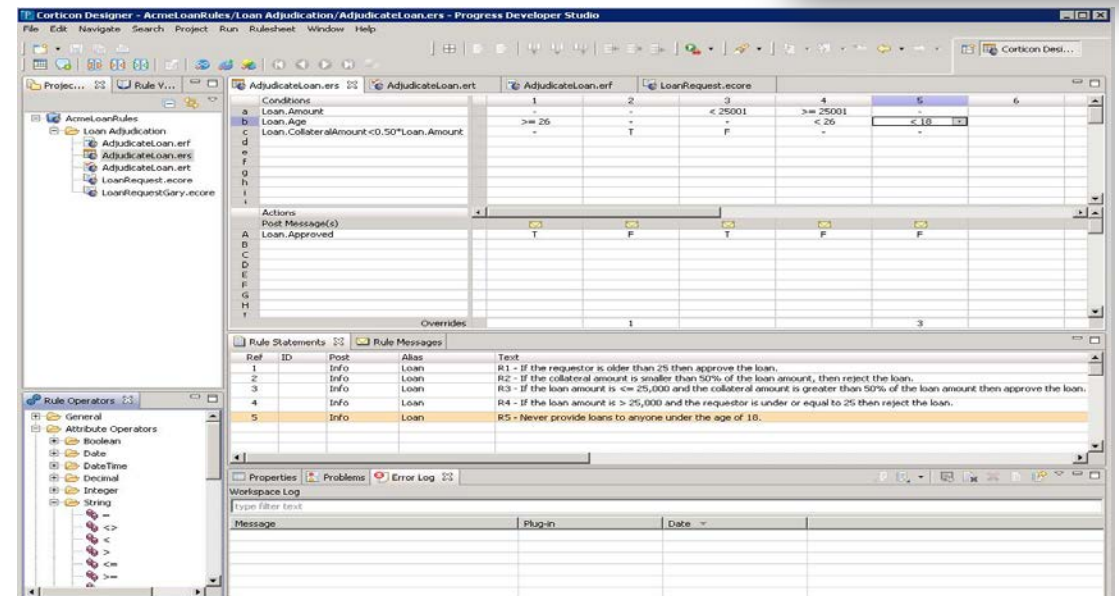
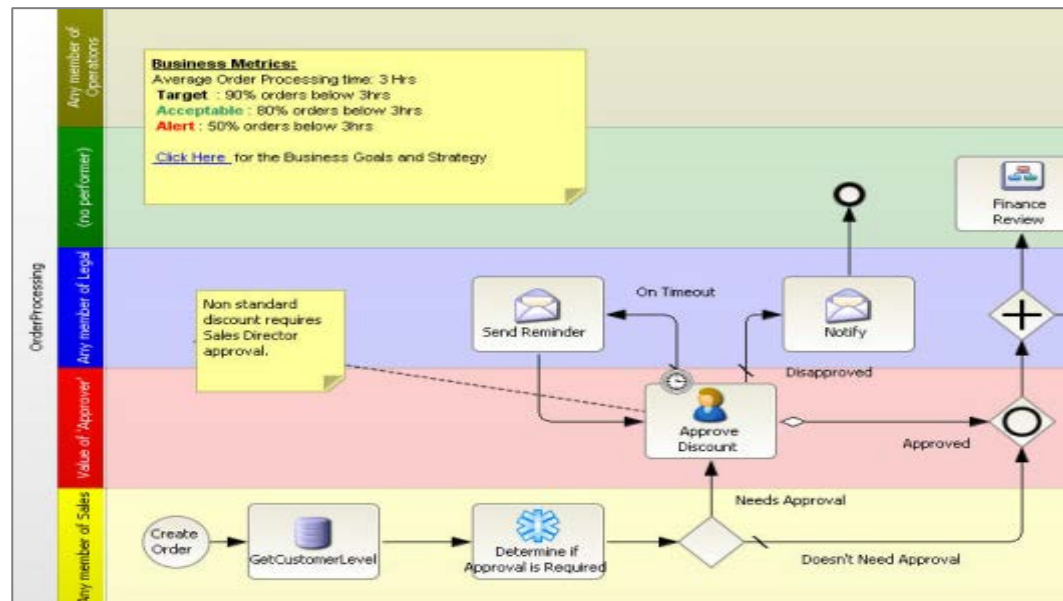
Improve Decision Making



Gain greater visibility into business operations, leading to process optimization that was difficult or impossible to previously achieve

Business Analysts Must...

Quickly innovate and respond to change

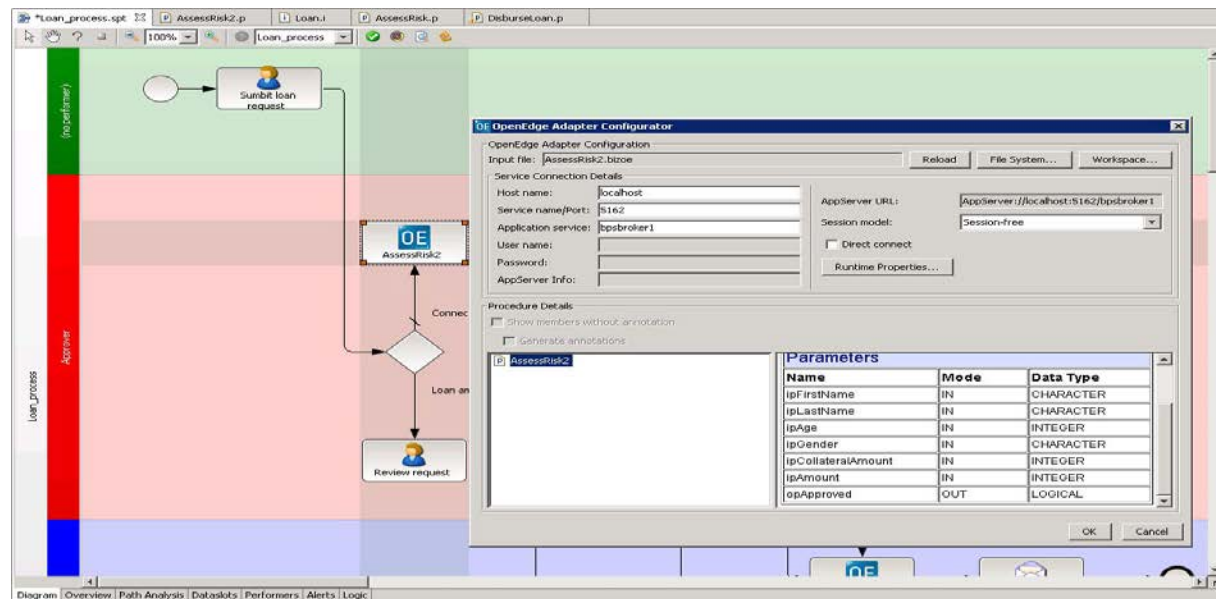


Define and optimize process steps without involving Engineering

Maintain and validate business rules to meet business objectives

Developers Must...

Implement Systems Faster and Cheaper



Enrich process models, connecting process steps to business logic without complex coding, resulting in fewer mistakes/errors

Deploy and integrate business rules into OpenEdge applications

Drivers for Next Gen Apps

Volatility	<ul style="list-style-type: none">■ Adapt logic & workflow rapidly■ Simplify customization
Visibility	<ul style="list-style-type: none">■ Prove regulatory compliance■ Accessible to business users
Empower Business Users	<ul style="list-style-type: none">■ Closer to business needs■ Free up ABL resources
Complexity	<ul style="list-style-type: none">■ Detect and avoid ambiguity or incompleteness in logic

Scenario for Lab Exercises: Simplified Loan Application Process

Accept -> Acknowledge -> Approve -> Price -> Notify

- Going from:
 - OpenEdge GUI for .NET front end
 - ABL logic for automated loan approval & loan pricing
 - Manual acknowledgements, notifications & approval routing



Lab 1

- Re-use existing ABL approval and pricing logic
- Adds web UI option for loan application
- Automates acknowledgements, notifications and approval routing

Lab 2

- Adds business rules for more complex automated loan approval & for loan pricing

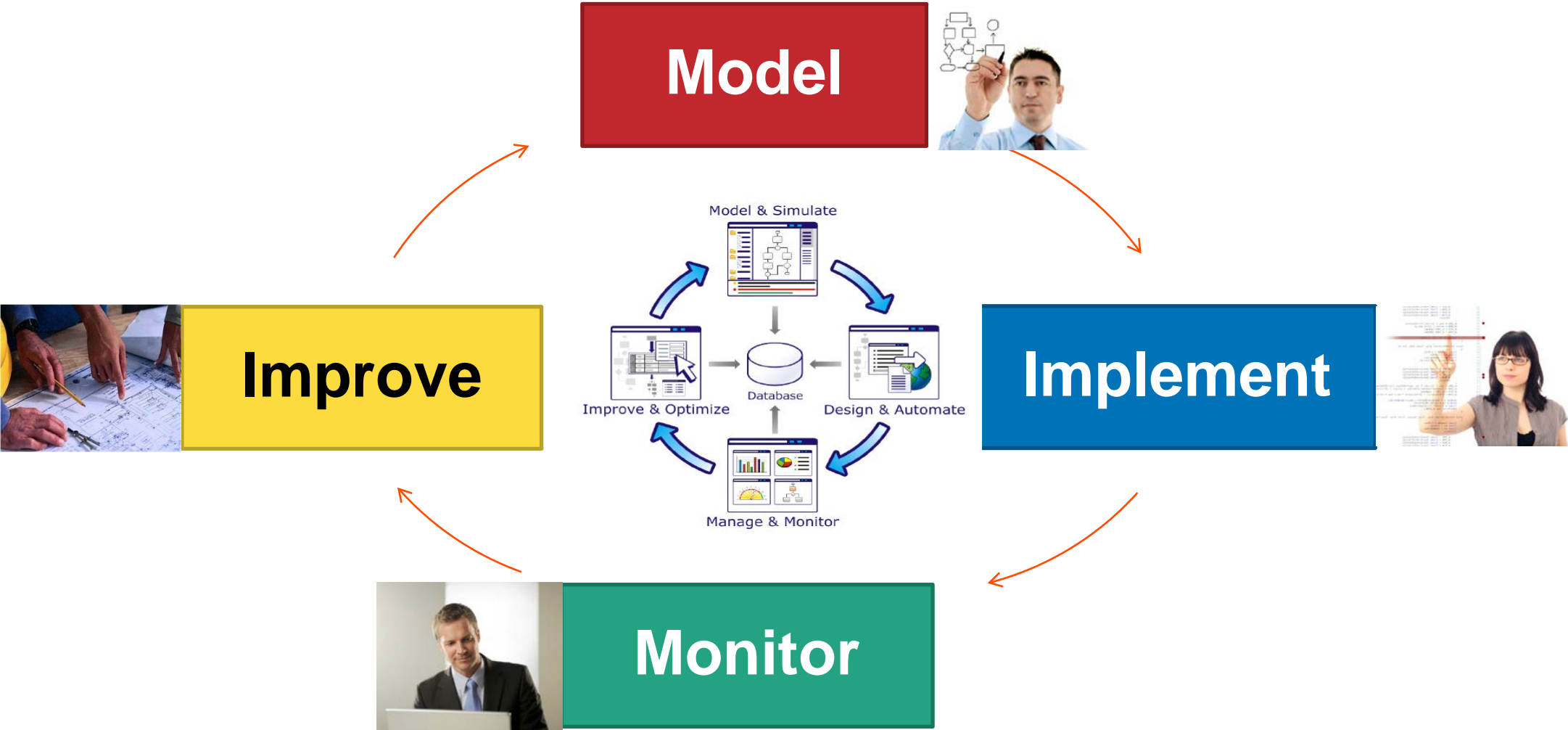
Lab 3

- Steps through business rule and process change cycles

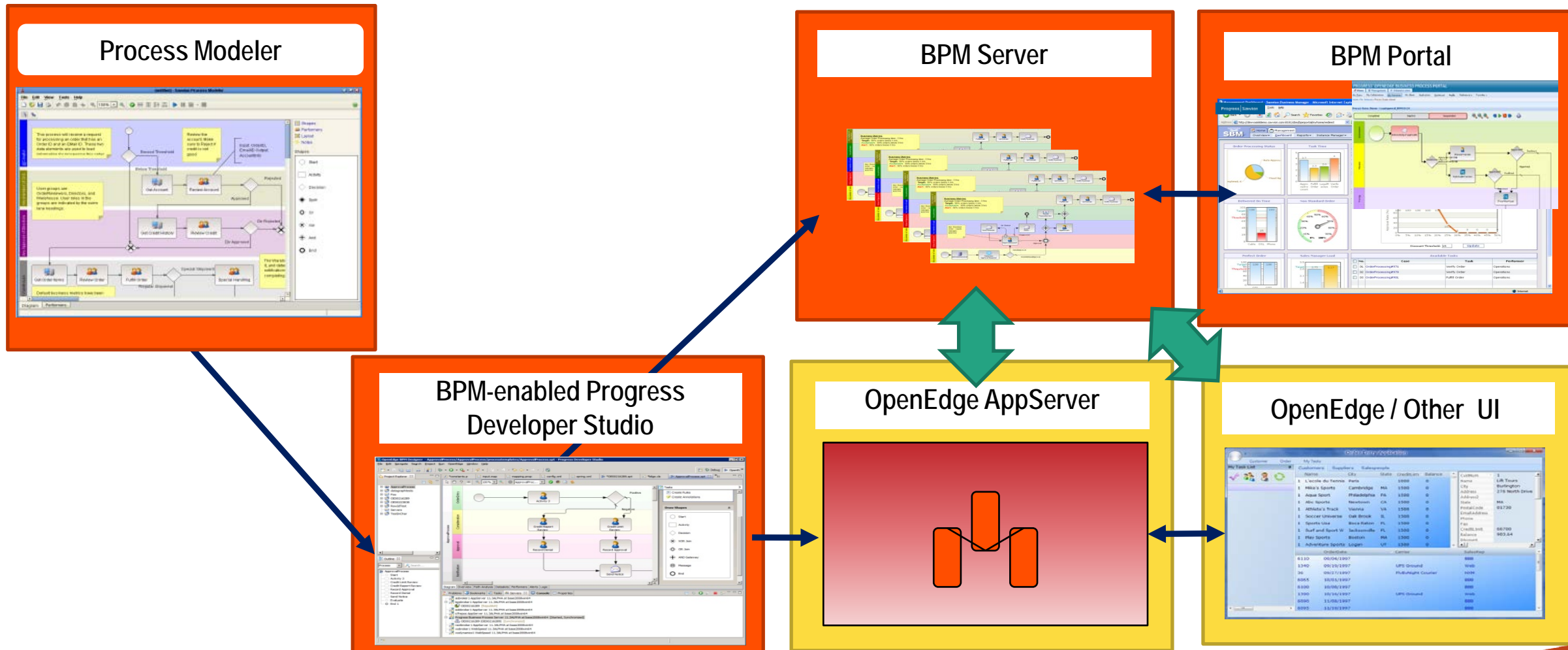
Questions and Discussion

OpenEdge BPM enables **agile**
model-driven workflow design and
automation, improving
consistency and real-time
end-to-end **visibility**.

Roles and Products Usage



Key Components of OpenEdge BPM



OpenEdge BPM Incremental Adoption Paths

Modeling	Formal unambiguous definition of process Insights possible through process simulation	Continuous Process Optimization
Monitoring	Hook apps into processes via BPM APIs Apps still control their own workflow	
Exception Automation	Incrementally add automated work steps to handle exceptional scenarios	
Full Automation	Gradually remove workflow logic from code Maximizes agility to adapt & evolve workflow	

**OpenEdge BPM models and automates both application-level workflows
AND the broader business process contexts within which OpenEdge
applications participate**

Demo – Building a Simple Business Process

Questions and Discussion



Hands On Workshop: Lab 1 (BPM)

Connect to Your Arcade Instance



- Check email for hostname of your Corticon Workshop Arcade image
- Connect with Remote Desktop client:
 - Username: Administrator (no domain)
 - Password: Exchange2014
- Further details in Workshop Labs document
- Once connected, PDF version of Workshop Labs doc can be found on VM desktop

Exercise 1: Create Loan Approval Business Process Application (45 Minutes)

Layout process model

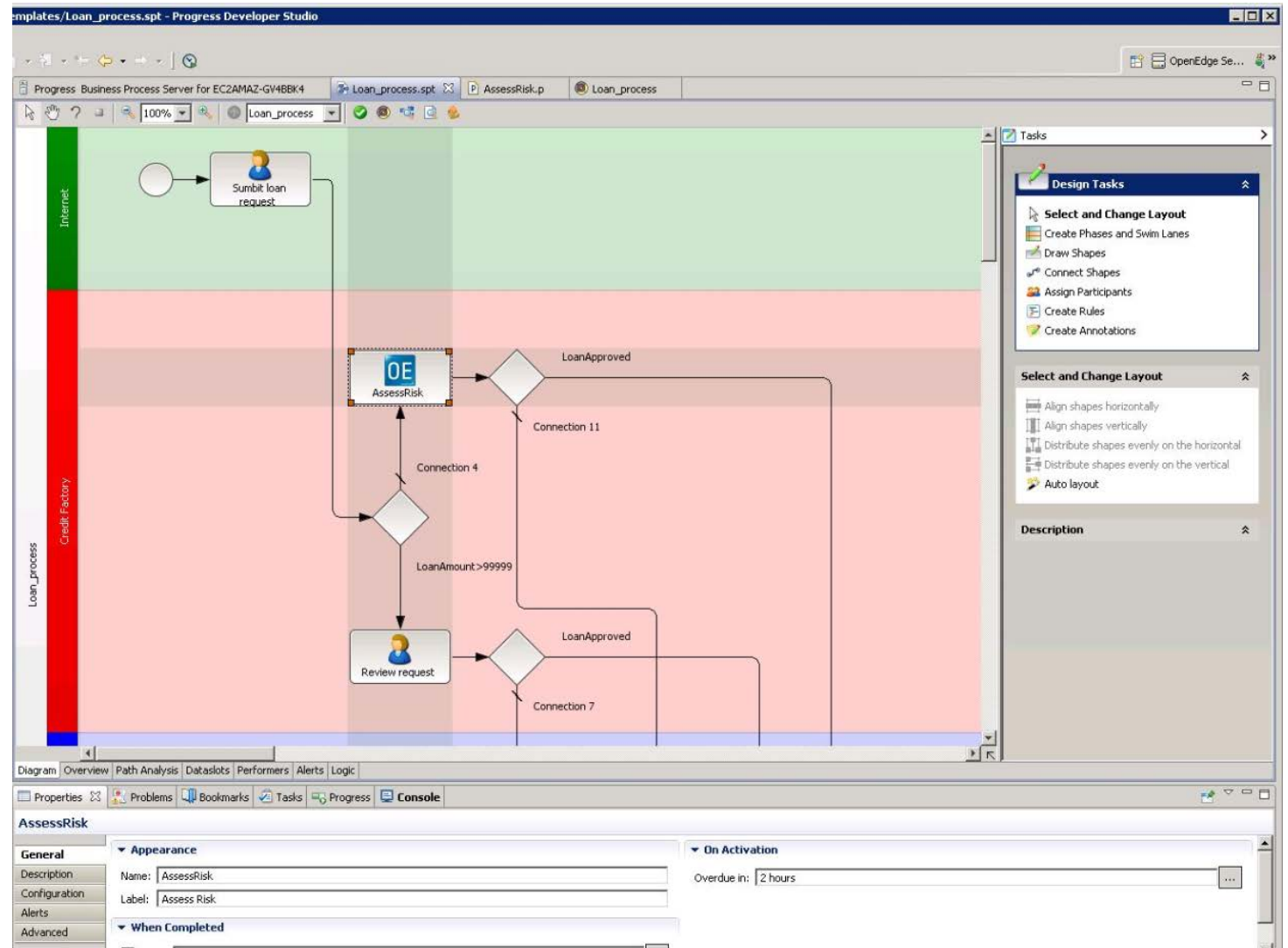
Define data slots

Assign performers

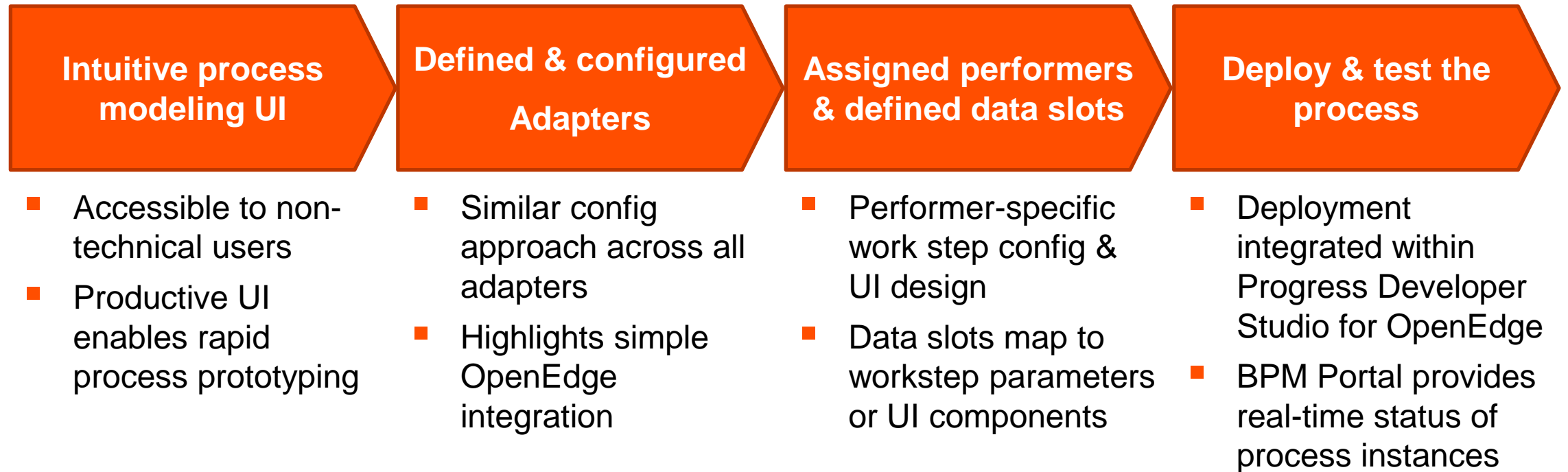
Configure adapters

Deploy process to BP Server

Test the process application



Review Exercise 1: Create Loan Approval Business Process Application



Questions and Discussion

Progress Corticon is software
to help make the **Right**
Decision at the **Right Time**
with **Business Agility**

Automating Business Rules – The Problem

Traditional approach is programming-based

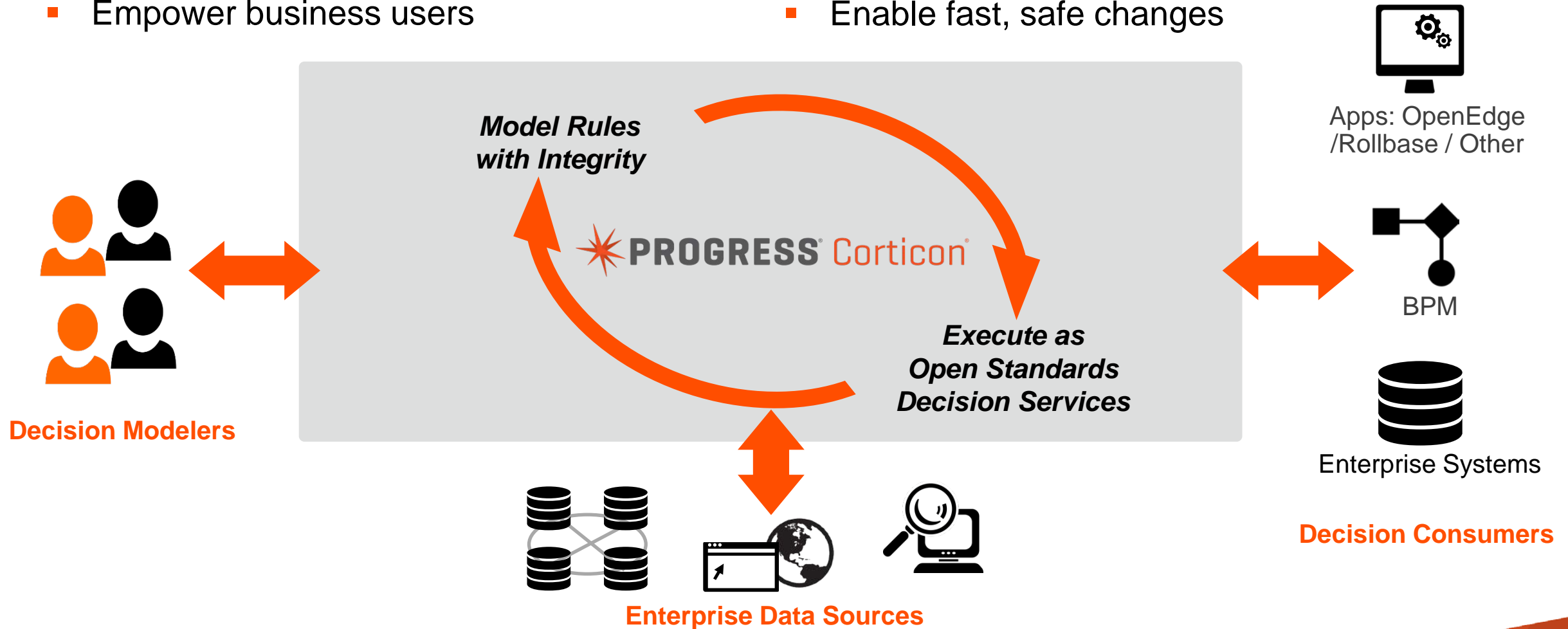
- Simple rules difficult to automate, sophisticated ones impossible
- Single change can impact hundreds of rules/processes



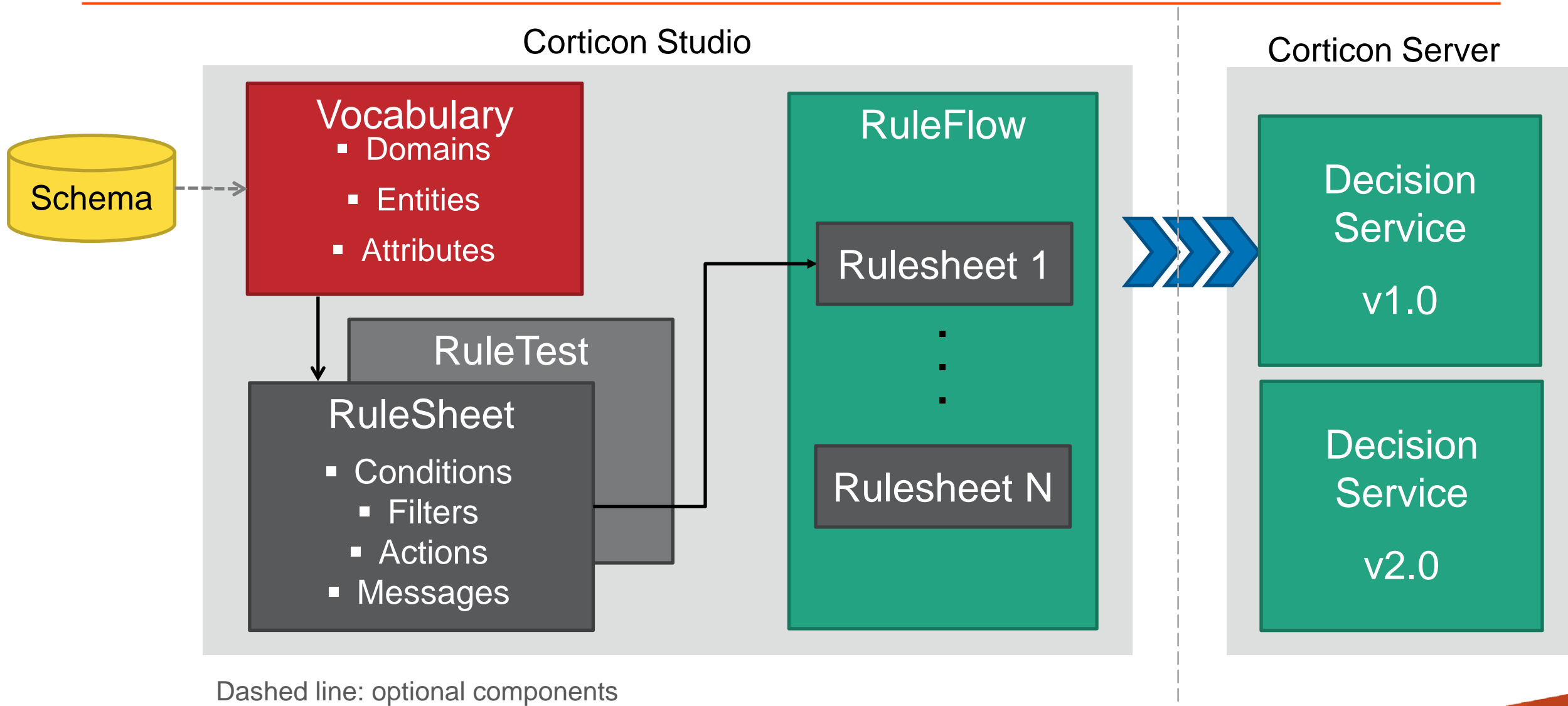
Corticon enables organizations to make better, faster decisions by automating business rules

The Solution: Progress Corticon Business Rules Management System

- Separate decision logic from code
- Empower business users
- Ensure performance & scalability
- Enable fast, safe changes

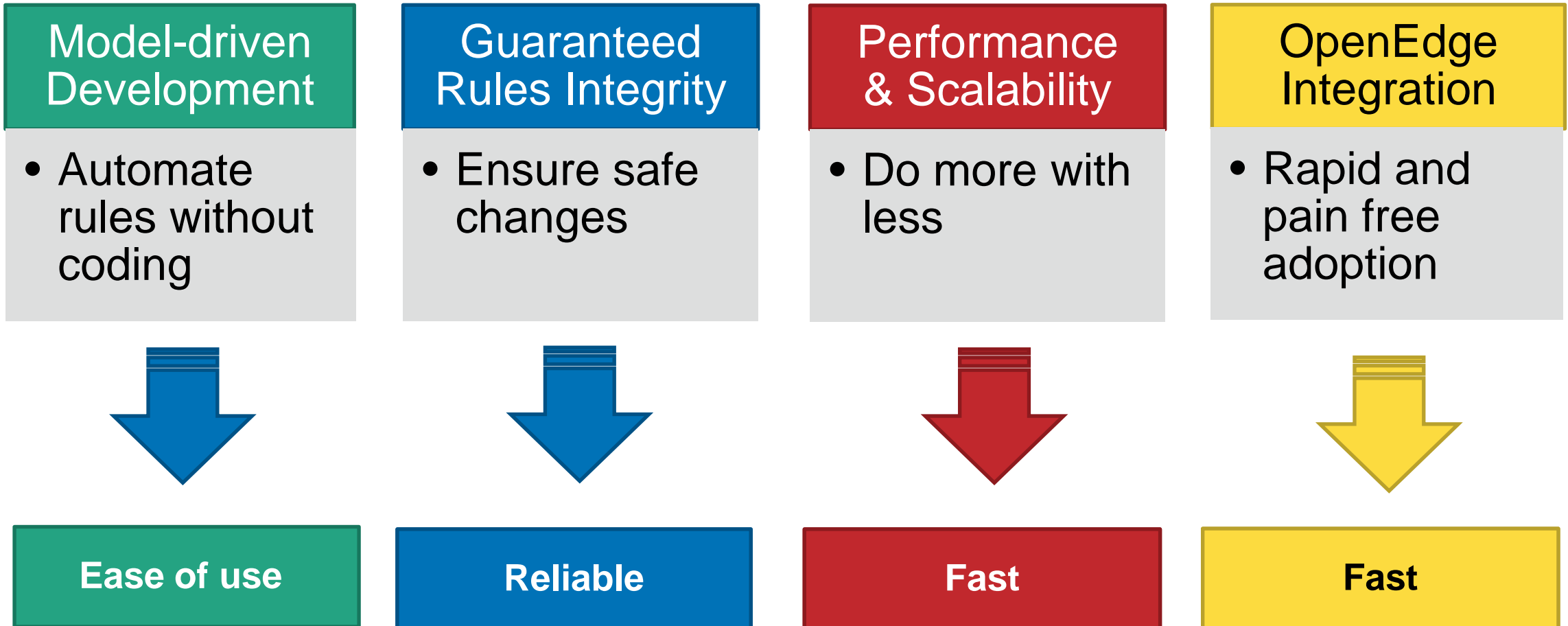


Corticon Rule Modeling



Demo – Build a Simple Decision Service

Corticon Differentiation



CHALLENGE

- Meridian Health Plan needed to expand healthcare claims processing business into new states and keep up with changing regulations as HIPPA and the Affordable Care Act (“Obamacare”)

SOLUTION

- Use **Progress Corticon** BRMS to modernize existing OpenEdge architecture

BENEFIT

- Empower healthcare domain expert to manage volatile decision rules outside of the OpenEdge ABL
- Accelerate application customization covering the needs of each customer as well as state/local regulatory schemes

Guaranteed Rule Integrity Compresses Development Lifecycle

Traditional Approach

Often contains errors and performance issues



**Reduce development
and change cycles
by 90%**

Corticon Approach



Higher quality, higher performance, agility

* Requires Technical Resource

NCAA Case Study: Proven Productivity Benefits of Corticon

Sample ROI Analysis – Automation of single, decision-making task*

	1 st Generation	Corticon
Initial Development		
Analyze	20 hours	20 hours
Prepare – Design	5 hours	N/A
Prepare – Implement	200 hours	2 hours
Total	225 hours	22 hours
Change Cycle		
Analyze	15 hours	0.5 hours
Prepare – Design	7 hours	N/A
Prepare – Implement	28 hours	1.5 hours
Total	50 hours	2 hours

**10x
Improvement**

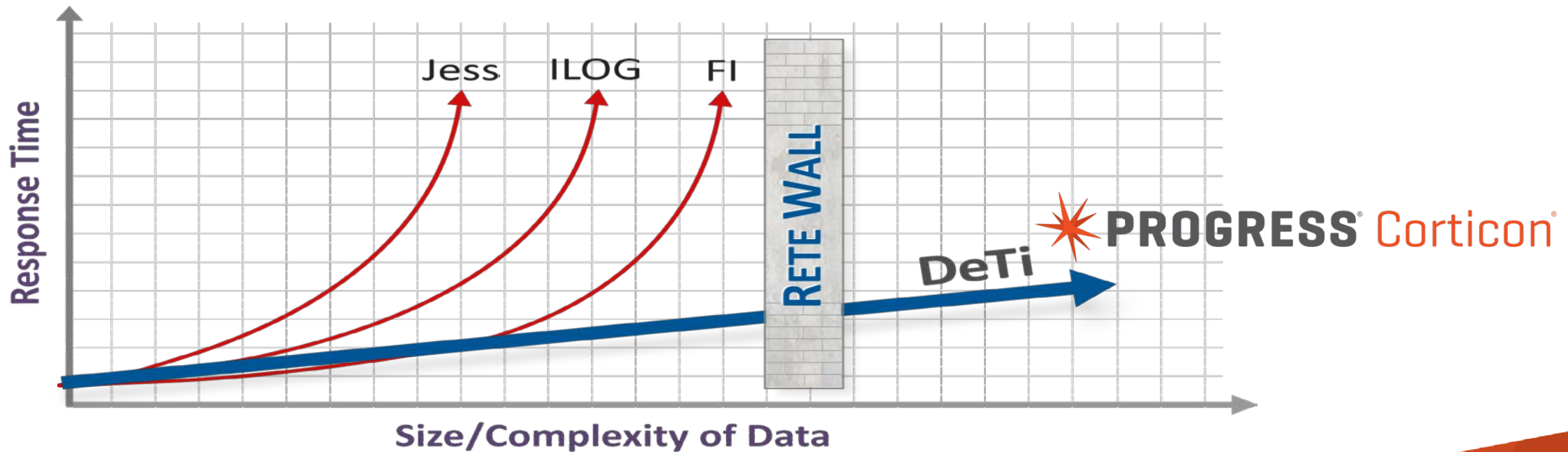
**25x
Improvement**



**Per NCAA customer testimonial.*

Performance & Scalability

- Traditional rule engine algorithm is Rete
 - Scales well with increasing number of rules
 - Degrades exponentially with increasing complexity of data – the “Rete Wall”
- Corticon’s patented DeTi (Design Time) algorithm
 - Scales linearly with number of rules and complexity of data



OpenEdge and Corticon

1. Simple, fast ABL API

- Simple API hides most invocation complexity & abstracts transport
- ABL apps can reuse existing metadata as i/o (ProDataSets, Temp Tables)
- Productivity macros: **BR-CONNECT**, **BR-INVOKE** and **BR-GETMSG**

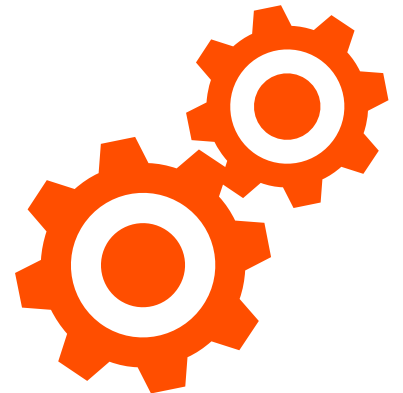
2. Design-time Meta-data integration

- Create Corticon vocabulary from existing TempTables and ProDataSets

3. Enterprise Data Connector: dynamic code-free OpenEdge DB integration

- Enrich request data with dynamic OE DB lookup
- Add or update data in OE DB direct from Corticon decision service

4. Corticon complements OpenEdge BPM

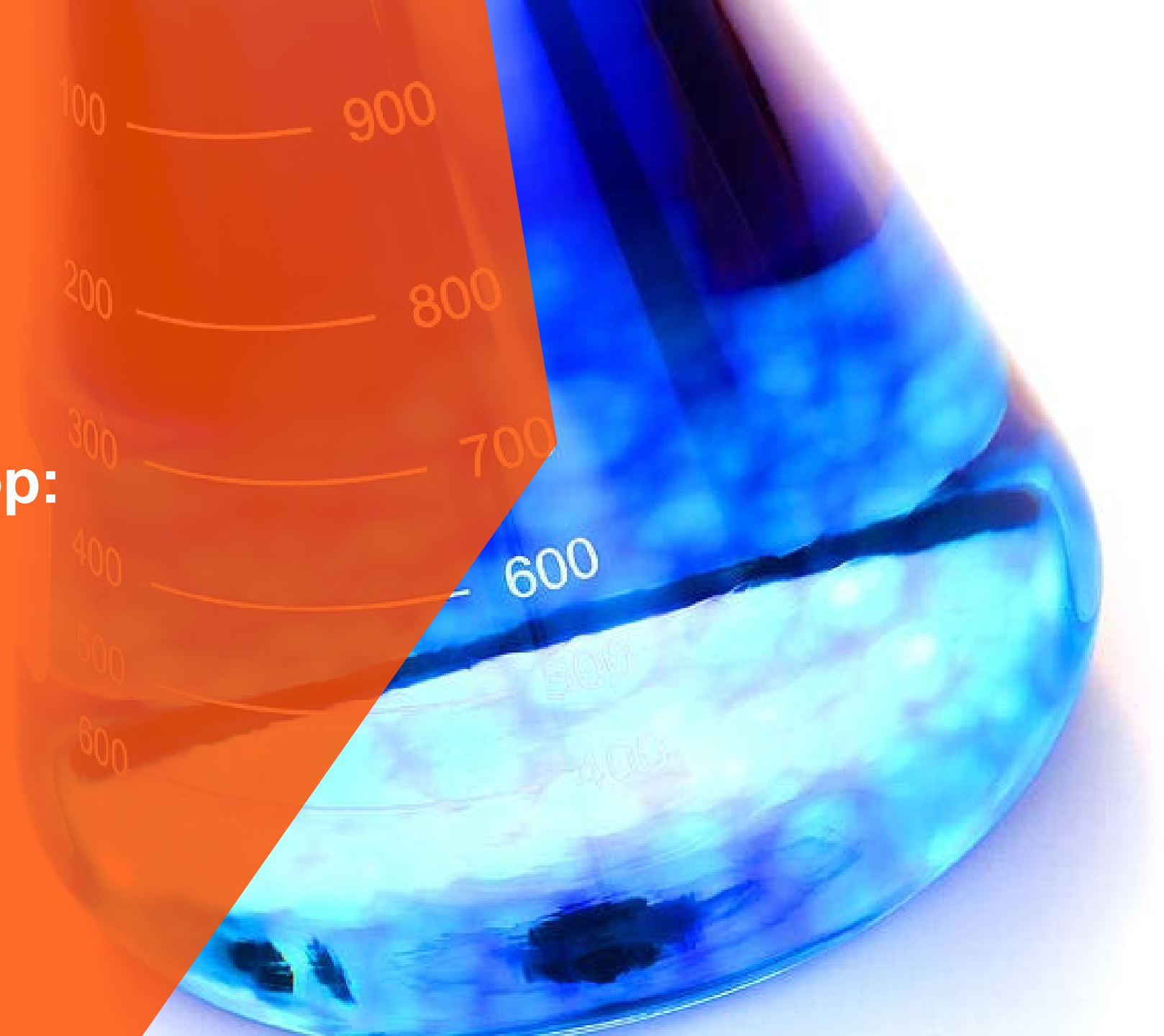


Why Use Corticon?

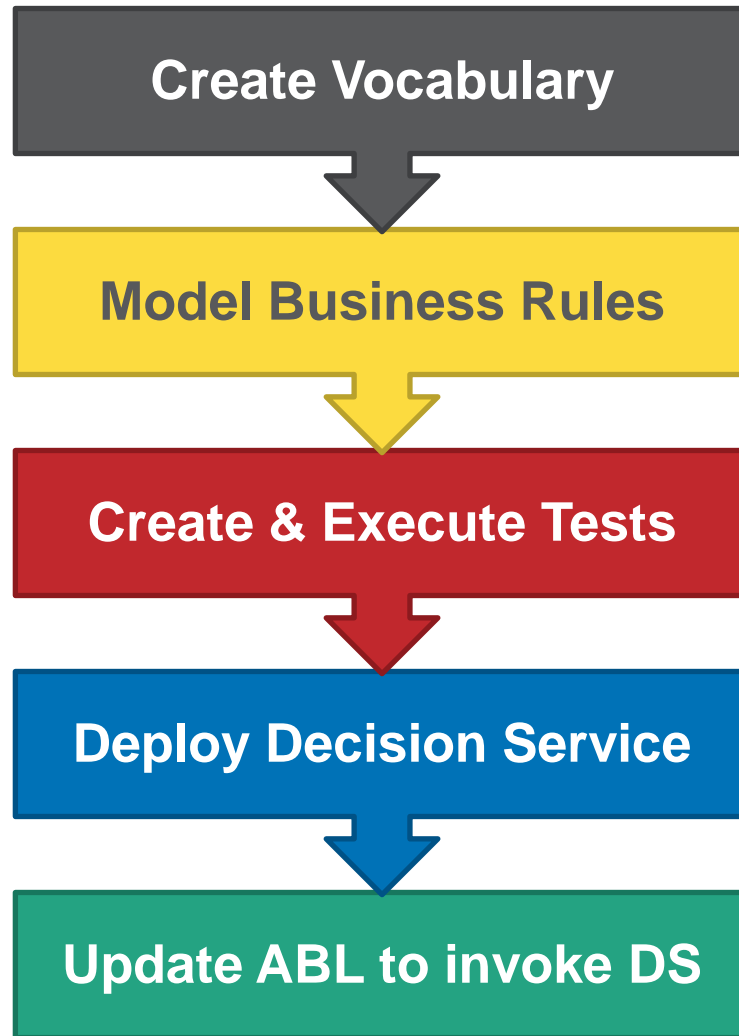
- Enables **business domain experts** (as well as IT) to maintain volatile decision logic
- Allows some decisions to be managed in a **separate tier** with a more agile lifecycle
- **Accelerates** development and **reduces** maintenance time
- Frees up valuable OE **resources**
- Improves ease of use through **good visual tooling**
- Integrity checks improve application **quality**



Hands On Workshop: Lab 2 (BRMS)



Exercise 2: Create Corticon Loan Approval Decision Service (45 minutes)



Corticon Designer - Progress Exchange 2013/Rulesheet/RiskRating.ers - Progress Developer Studio

File Edit Navigate Search Project Run Rulesheet Window Help

Rule Vocabulary

- Applicant
 - Applicant
 - age
 - isSkydiver
 - name
 - number
 - riskRating

Project Explorer

- Progress Exchange 2013
 - Documents
 - Ruleflow
 - Rulesheet
 - Ruletest
 - Vocabulary

*RiskRating.ers

Conditions	0	1	2	3
a Applicant.isSkydiver		T	-	F
b Applicant.age		-	< 30	>= 30
c				
d				
e				
f				

Actions

Post Message(s)

A Applicant.riskRating		'High Risk'	'Low Risk'
B			
C			
D			
E			

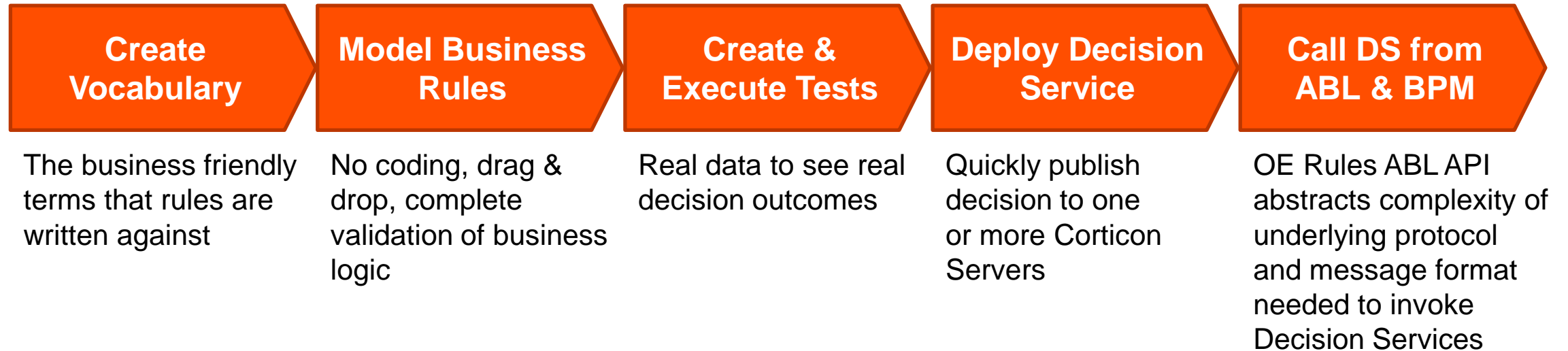
Overrides

	2		

Rule Statements

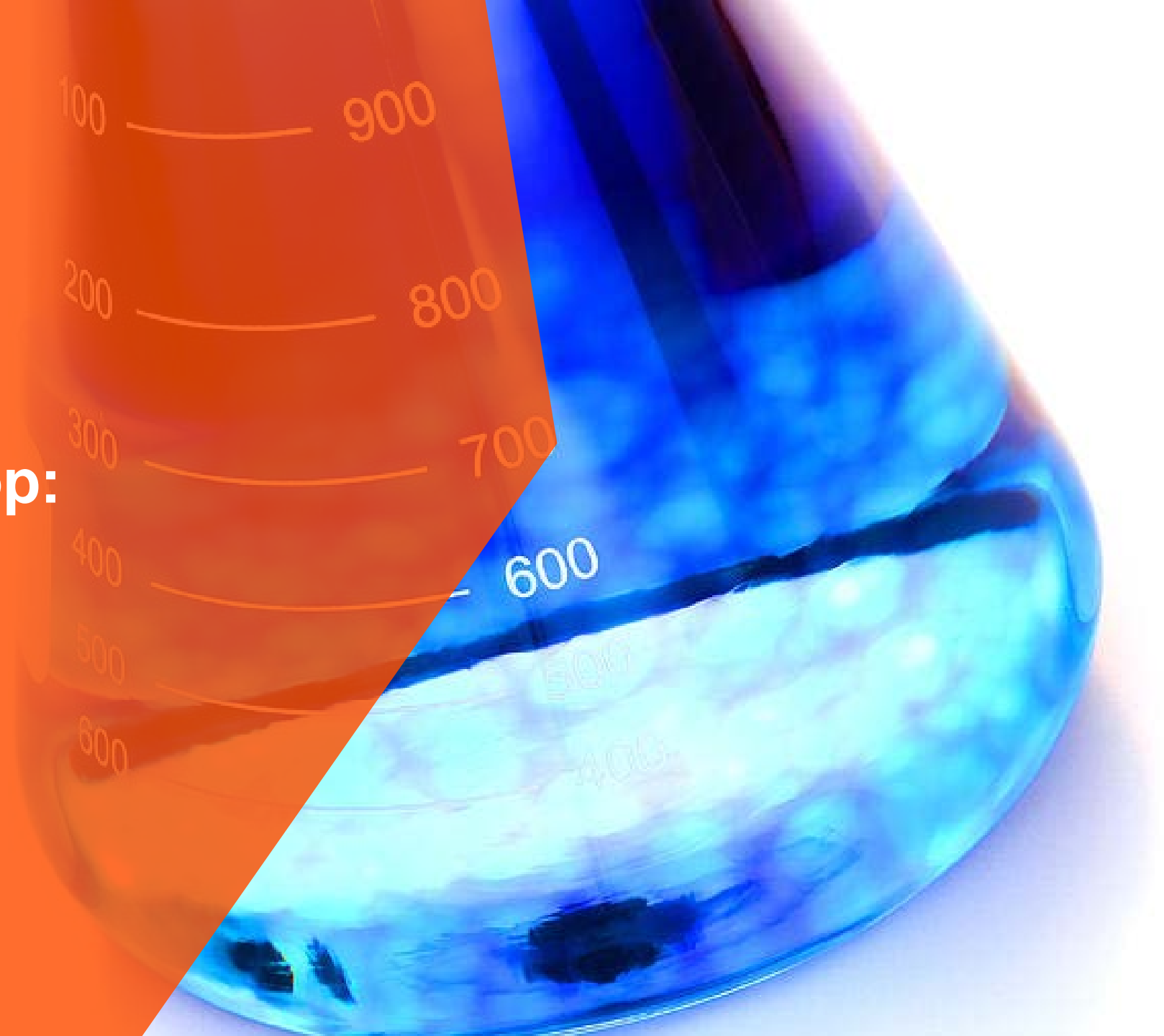
Ref	ID	Post	Alias	Text
1		Info	Applicant	Applicants who skydive have a High Risk rating
2		Info	Applicant	Applicants under 30 have a Low Risk rating
3		Info	Applicant	Applicants 30 and over who don't skydive are Medium Risk

Review Exercise 2: Model Corticon Decision Service



Questions and Discussion

Hands On Workshop: Lab 3 (Change)



Exercise 3: Update Business Process & Decision Service (20 Minutes)

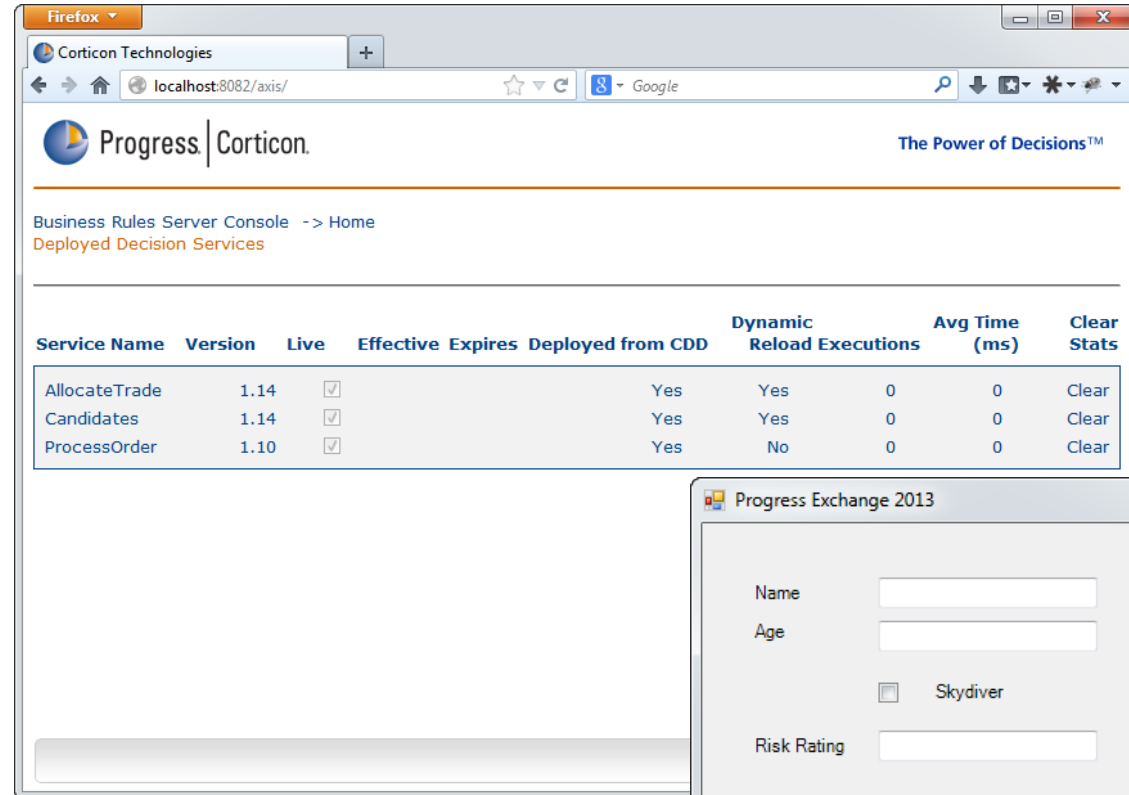
Update existing Rulesheet

Re-deploy the Decision Service

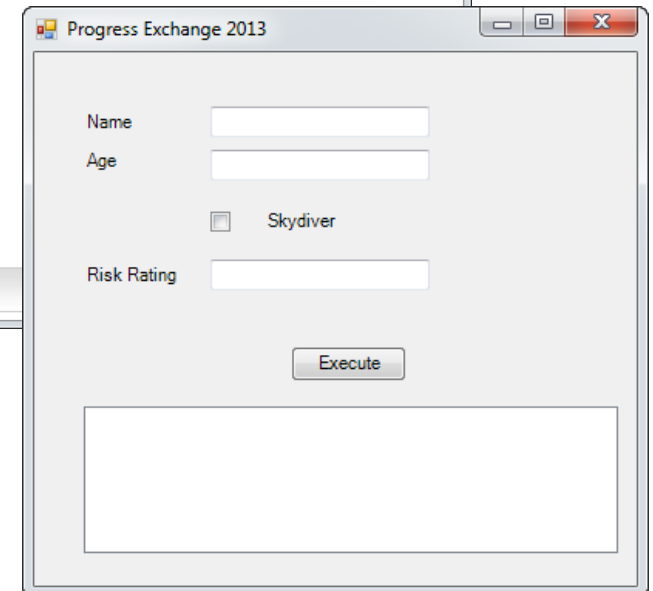
Evolve existing Business Process

Re-deploy the Business Process

Test updated business process



Service Name	Version	Live	Effective	Expires	Deployed from CDD	Dynamic Reload	Executions	Avg Time (ms)	Clear Stats
AllocateTrade	1.14	<input checked="" type="checkbox"/>			Yes	Yes	0	0	Clear
Candidates	1.14	<input checked="" type="checkbox"/>			Yes	Yes	0	0	Clear
ProcessOrder	1.10	<input checked="" type="checkbox"/>			Yes	No	0	0	Clear



Progress Exchange 2013

Name

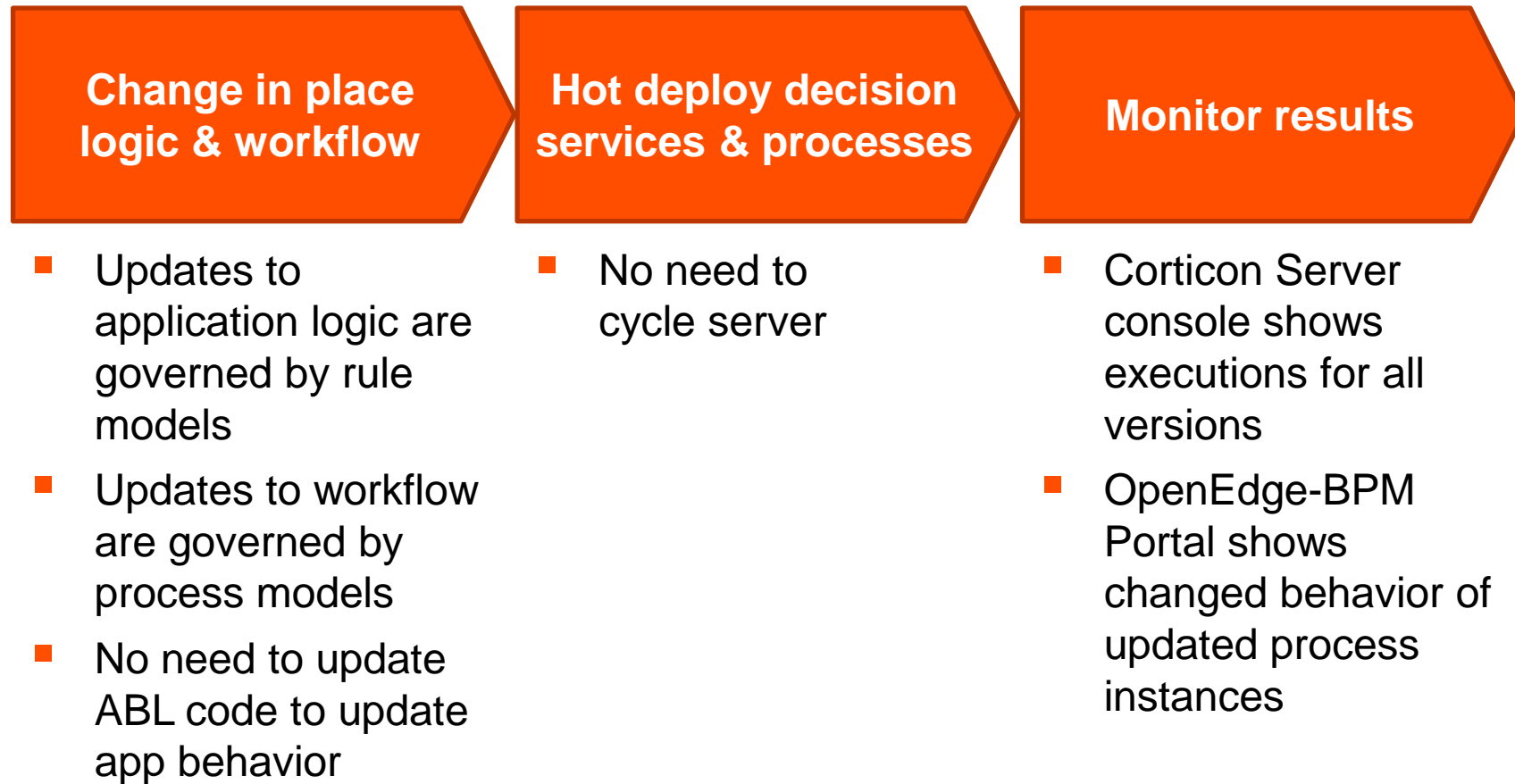
Age

☐ Skydiver

Risk Rating

Execute

Review Exercise 3: Update Decision Service



Questions and Discussion

What Next?

TODAY

PLEASE... Interact... Learn... Think of a use case... Experiment...



TOMORROW

Brainstorm use cases with your team – and with your Progress team

Experience a demo of Corticon and/or OpenEdge-BPM applied in your context

Evaluate Corticon Studio and/or OpenEdge-BPM (in Progress Dev Studio for OpenEdge)

Build out a proof point use case – it doesn't take long – and we'll help!

AND...

Related Breakout Sessions

Consider attending these breakouts to find out more about Corticon & OpenEdge BPM:

Corticon BRMS

Wed@11:00: “Progress® Corticon®—Understanding Business Rules and When to Use Them” (Mark Allen, Progress)

Wed@2:45: “Customizing Your Application, NO PROBLEM!” (Carole Miller, Progress)

OpenEdge BPM

Tue@4:15: “What's New in OpenEdge BPM 11.4” (Suresh Inavolu, Progress)

Both

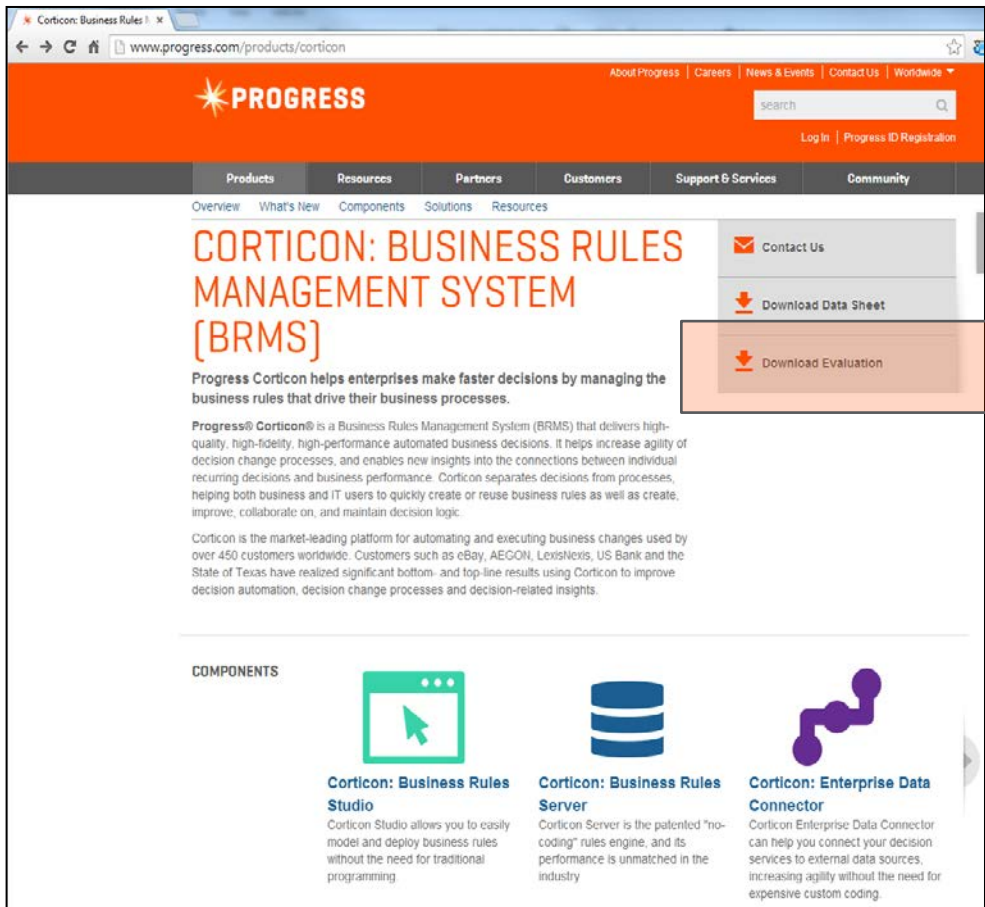
Tue@11:00: “Modern Business Application Development” (Peter Judge, Progress)

Tue@2:45: “Using OpenEdge, Corticon, Rollbase and Node.js to Create a Dynamic, Rule- and Model-Driven Web-UI text” (Mike Liewehr, Akioma)

Wed@1:30: “Corticon Integration with OpenEdge & BPM (OpenEdge-Corticon-BPM)” (Jawahar Surapaneni, Progress)

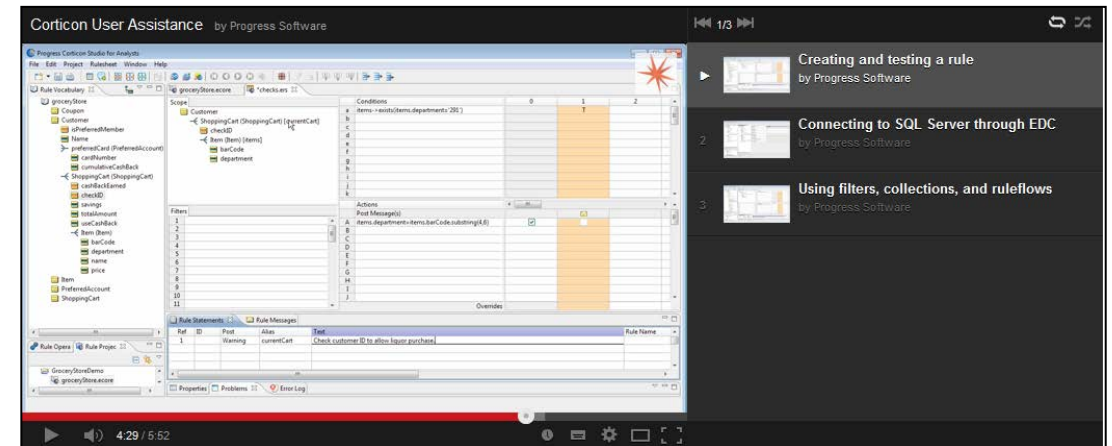
To Learn More...

Evaluate Corticon & OpenEdge BPM



The screenshot shows the Progress Corticon website. The header features the Progress logo and navigation links. The main content area is titled "CORTICON: BUSINESS RULES MANAGEMENT SYSTEM [BRMS]" and includes a description of the system's capabilities. A sidebar on the right contains links for "Contact Us", "Download Data Sheet", and "Download Evaluation". The "Download Evaluation" link is highlighted with a red box. Below the main text, there is a section titled "COMPONENTS" with three icons and descriptions: "Corticon: Business Rules Studio", "Corticon: Business Rules Server", and "Corticon: Enterprise Data Connector".

Watch Corticon & OpenEdge-BPM in Action on YouTube



<http://www.youtube.com/user/ProgressSW>

Take some Web-based Training Courses



PROGRESS EXCHANGE²⁰¹⁴

Visit the Resource Portal

- **Get session details & presentation downloads**
- **Complete a survey**
- **Access the latest Progress product literature**

www.progress.com/exchange2014



PROGRESS